

THIS INSTRUMENT PREPARED BY  
 DAVID P. LINDLEY  
 OF  
**CAULFIELD and WHEELER, INC.**  
 SURVEYORS - ENGINEERS - PLANNERS  
 7900 GLADES ROAD, SUITE 100  
 BOCA RATON, FLORIDA 33434 - (561)392-1991

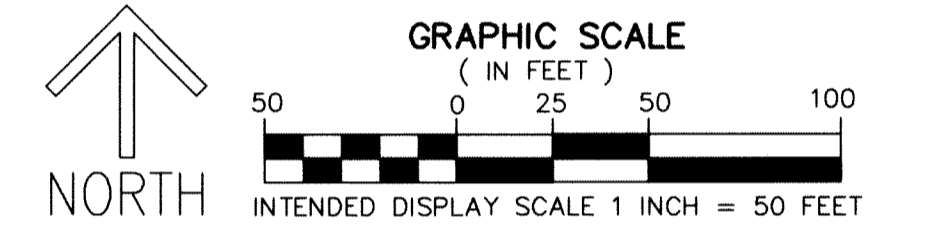
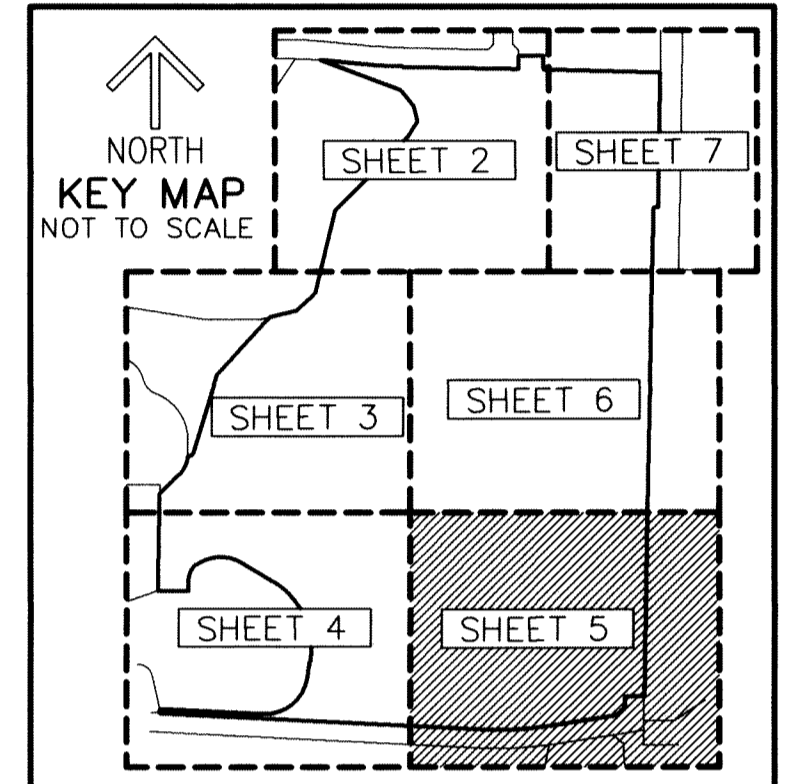
# PALM BEACH PARK OF COMMERCE, P.I.P.D.-PLAT 29-PROJECT ENERGY

BEING A PORTION OF SECTION 17, TOWNSHIP 41 SOUTH, RANGE 41 EAST, PALM BEACH COUNTY, FLORIDA

MATCH LINE SHEET 6

50

SHEET 5 OF 7



- NOTES**  
**COORDINATES, BEARINGS AND DISTANCES**
- COORDINATES SHOWN ARE GRID  
 DATUM = NAD 83 1990 ADJUSTMENT  
 ZONE = FLORIDA EAST  
 LINEAR UNIT = US SURVEY FEET  
 COORDINATE SYSTEM 1983 STATE PLANE  
 TRANSVERSE MERCATOR PROJECTION  
 ALL DISTANCES ARE GROUND UNLESS OTHERWISE NOTED  
 SCALE FACTOR = 1.0000070  
 GROUND DISTANCE X SCALE FACTOR = GRID DISTANCE  
 BEARINGS AS SHOWN HEREON ARE GRID DATUM,  
 NAD 83 1990 ADJUSTMENT, FLORIDA EAST ZONE.
- LEGEND/ABBREVIATIONS**
- ☉ - CENTERLINE
  - Δ - DELTA (CENTRAL ANGLE)
  - L - ARC LENGTH
  - R - RADIUS
  - CB - CHORD BEARING
  - CD - CHORD DISTANCE
  - DE - DRAINAGE EASEMENT
  - N.P.B.C.I.D. - NORTHERN PALM BEACH COUNTY IMPROVEMENT DISTRICT
  - LB - LICENSED BUSINESS
  - O.R.B. - OFFICIAL RECORD BOOK
  - PC - POINT OF CURVATURE
  - PCC - POINT OF COMPOUND CURVATURE
  - PRC - POINT OF REVERSE CURVATURE
  - PNT - POINT OF NON-TANGENCY
  - PT - POINT OF TANGENCY
  - P.I.P.D. - PLANNED INDUSTRIAL PARK DEVELOPMENT
  - N - NORTHING WHEN USED WITH COORDINATES
  - E - EASTING WHEN USED WITH COORDINATES
  - UE - UTILITY EASEMENT
  - W.M.M.E. - WATER MANAGEMENT MAINTENANCE EASEMENT
  - PRM - INDICATES SET 4" X 4" X 24" CONCRETE PERMANENT REFERENCE MONUMENT WITH ALUMINUM DISK STAMPED "PRM C&W LB3591" UNLESS OTHERWISE NOTED
  - △ - DENOTES HORIZONTAL CONTROL POINT
  - ✱ - INDICATES SECTION CORNER
  - ⊙ - INDICATES 1/4 SECTION CORNER
  - ELCRN - EAST LINE OF CORPORATE ROAD NORTH CORPORATE ROAD NORTH AND WALGREENS DRIVE PLAT BOOK 91, PAGES 82-84
  - SLCRN - SOUTH LINE OF CORPORATE ROAD NORTH CORPORATE ROAD NORTH AND WALGREENS DRIVE PLAT BOOK 91, PAGES 82-84
  - ELWT15 - EAST LINE OF WETLANDS PRESERVATION TRACT 15 O.R.B. 6297, PAGE 1256
  - ELPC-7 - EAST LINE OF PARCEL C-7 O.R.B. 7073, PAGE 210
  - ELWP78 - EAST LINE OF WETLANDS PRESERVATION TRACT 8 PALM BEACH PARK OF COMMERCE P.I.P.D. PLAT NO. 1 PLAT BOOK 56, PAGES 172-176
  - ELP6 - EAST LINE OF PARCEL 6 PALM BEACH PARK OF COMMERCE P.I.P.D. PLAT NO. 1 PLAT BOOK 56, PAGES 172-176
  - NLWP79 - NORTH LINE OF WETLANDS PRESERVATION TRACT 9 PALM BEACH PARK OF COMMERCE P.I.P.D. PLAT NO. 1 PLAT BOOK 56, PAGES 172-176
  - ELWP79 - EAST LINE OF WETLANDS PRESERVATION TRACT 9 PALM BEACH PARK OF COMMERCE P.I.P.D. PLAT NO. 1 PLAT BOOK 56, PAGES 172-176
  - SLWP79 - SOUTH LINE OF WETLANDS PRESERVATION TRACT 9 PALM BEACH PARK OF COMMERCE P.I.P.D. PLAT NO. 1 PLAT BOOK 56, PAGES 172-176
  - NLCRS - NORTH LINE OF CORPORATE ROAD NORTH PALM BEACH PARK OF COMMERCE P.I.P.D. PLAT NO. 4 PLAT BOOK 68, PAGES 88-89
  - WLDRR - WEST LINE OF DONALD ROSS ROAD PALM BEACH PARK OF COMMERCE P.I.P.D. PLAT NO. 4 PLAT BOOK 68, PAGES 88-89
  - NLDRR - NORTH LINE OF DONALD ROSS ROAD PALM BEACH PARK OF COMMERCE P.I.P.D. PLAT NO. 4 PLAT BOOK 68, PAGES 88-89
  - WLPA - WEST LINE OF PARCEL A PALM BEACH PARK OF COMMERCE P.I.P.D. PLAT NO. 4 PLAT BOOK 68, PAGES 88-89

MATCH LINE SHEET 4

